



i Series

A Wide Range of Options, No Compromises



FETTE
COMPACTING

together

from lab to production

Better together – from lab to production

For more than 75 years, Fette Compacting has been redefining precision in industrial tablet production. As the world market leader in integrated solutions for OSD (Oral Solid Dosage) manufacturing, we deliver decisive competitive advantages. Our portfolio ranges from high-performance tablet presses to specialized Containment solutions and process equipment.

But technology is only one part of our DNA. Guided by our principle “Together – from lab to production”, we support you throughout the entire life cycle of your products: from initial formulation in the lab through technology transfer to commercial production.

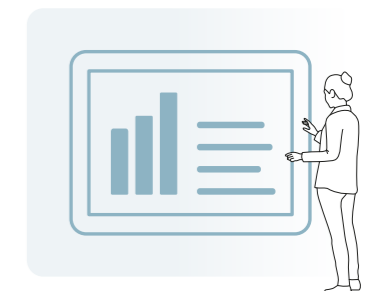
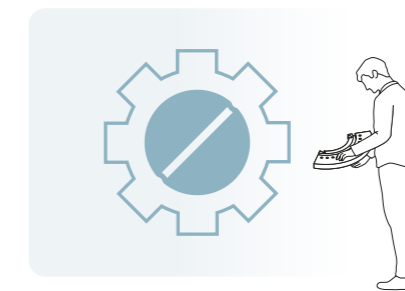
That way, you find the right solution for every product and get it to market faster. With our global network of five Competence Centers in Germany, China, the USA, India, and Brazil, along with 13 subsidiaries and representatives in 50 countries, we are always right where you need us.

As your holistic process partner, we provide complete solutions. Whether pharma, nutrition, or chemical: We combine tailored consulting with deep technological know-how. The result: customized, efficient solutions for every phase of your product life cycle – and a partnership that delivers real value.

Research & Development



Production



Knowledge Base QED

- › Concentrated expertise: Access to more than 75 years of tableting experience
- › Decide with confidence: A digital foundation for sound process planning

Formulation development

- › Formulation consulting: Expert support backed by pharmaceutical expertise
- › Understand your materials: Precise characterization of your active ingredients and excipients

Process Development

- › Test without risk: Emulator-based trials
- › Stay in control: Development of tailored control strategies
- › Leverage your data: Seamless integration of Process Analytical Technology (PAT)

Technology Transfer

- › Scale with ease: Reliable transition from development to production
- › Navigate regulatory requirements: Support in overcoming regulatory hurdles
- › Validate your processes: Efficient transfer and safeguarding of your processes

Production

- › Produce flexibly: Tablet presses for batch operations and continuous manufacturing
- › Protect people and the environment: Purpose-built containment solutions
- › All from a single source: Process equipment and tableting tools

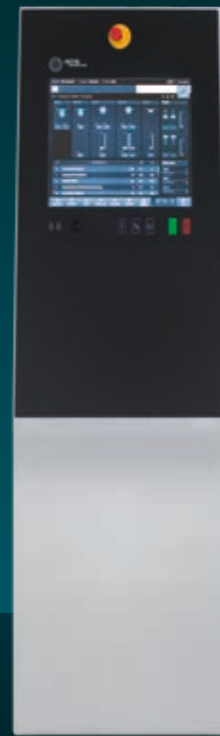
Process Optimization

- › Boost performance: Ongoing production support
- › Minimize risks: Identify and address weak points early
- › Improve processes: Development of customized optimization strategies

The i Series at a Glance

Tablet presses that deliver solutions for every scenario

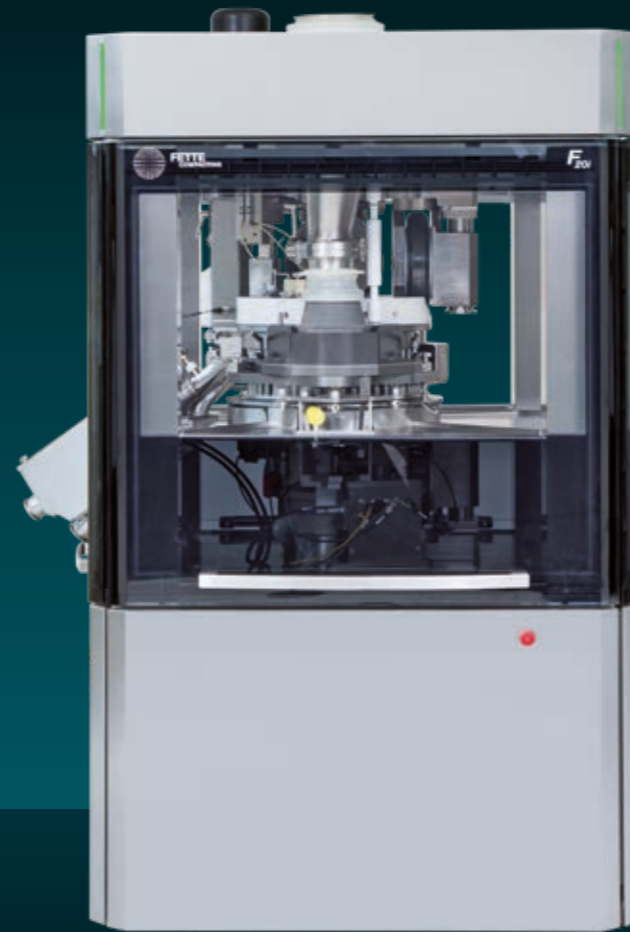
The i Series from Fette Compacting carries forward a legacy of proven tablet presses built to the highest quality standards. It delivers solutions for higher performance and easy handling – even in challenging production environments. Thanks to cross-generation system compatibility and intuitive operation, the i Series facilitates manufacturing and drives greater productivity – from start-ups to large-scale pharmaceutical companies.



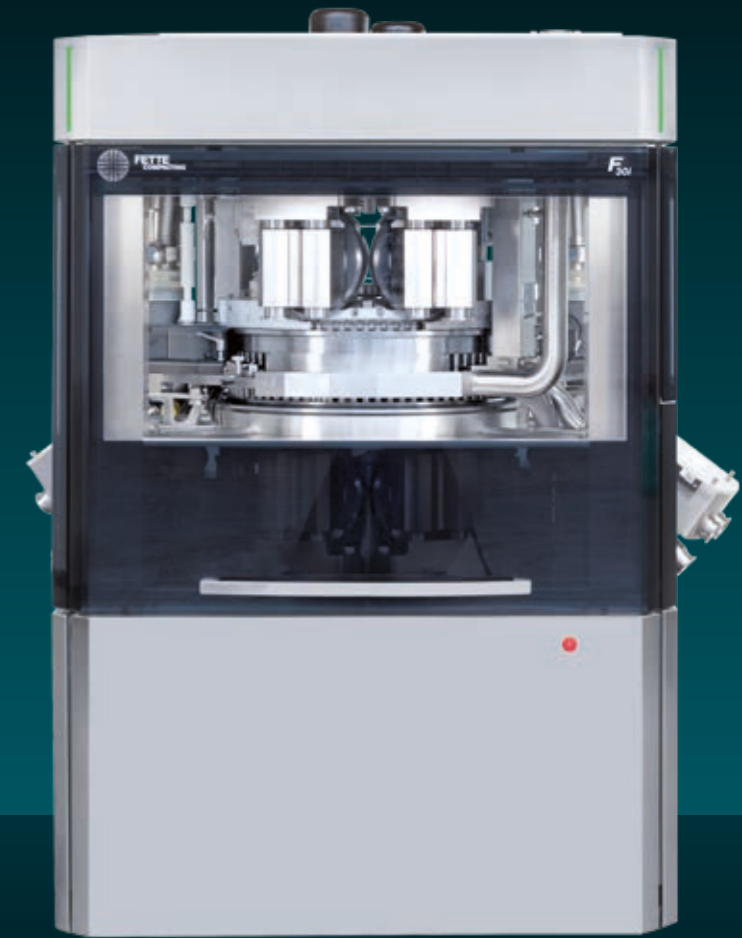
HMI The Human Machine Interface enables intuitive operation thanks to intelligent software support.



F10i The powerful, quickly adaptable single rotary tablet press for smaller batches.



F20i The all-rounder for a broad spectrum of products and batch sizes.



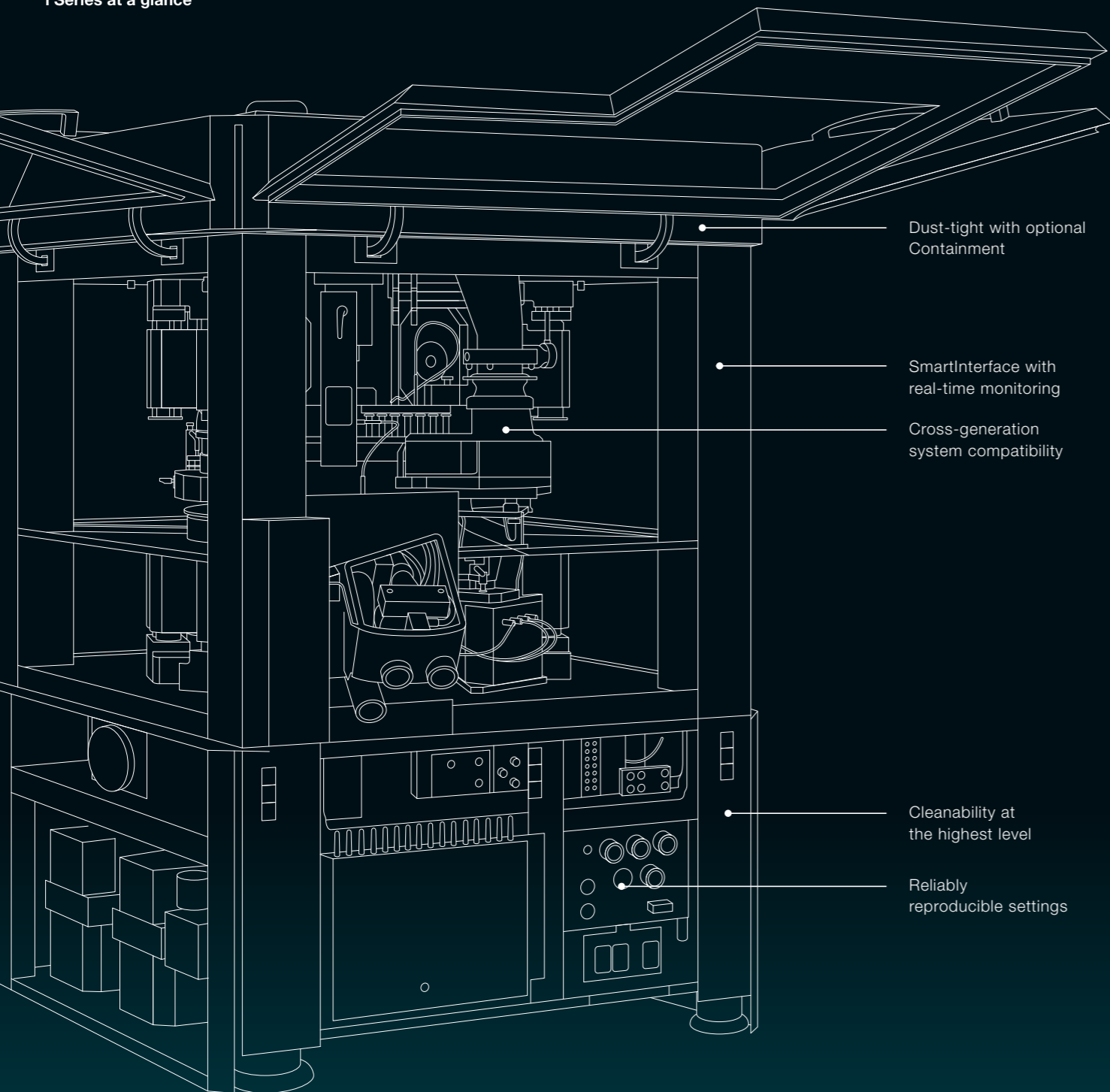
F30i The high-performance double rotary tablet press for maximum efficient production of large batches.

Punch stations (max.)	32	47	79
Maximum output (tablets/hour)	324,000	475,200	1,584,000
Tablet diameter (max.)	25 mm	25 mm	25 mm

Shared Strengths

The i Series features a range of innovative solutions that meet all current tableting requirements and enhance your production

Example F30i:
Key features of the entire
i Series at a glance



Dust-tight with optional
Containment

SmartInterface with
real-time monitoring

Cross-generation
system compatibility

Cleanability at
the highest level

Reliably
reproducible settings



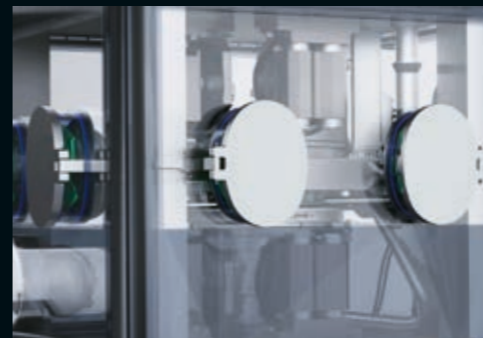
Powerful and effective

Customer experience confirms it: Switching to the new i Series boosts production. A key element is the Pmax® turret. Combined with FS12® punches and segment technology from Fette Compacting, output can be increased significantly – and even doubled, depending on the specifics of production.



Adaptable for Continuous Production and ePAT

The F20i and F30i can be connected to Continuous Direct Compression via the FE CPS as well as to embedded Process Analytical Technology (ePAT). The ePAT sensors can be retrofitted for both batch and continuous operation, enabling continuous real-time quality monitoring.



Dust-tight and Containment-capable

The i Series is dust-tight – an important feature for protecting operators from active ingredient exposure. The experts at Fette Compacting provide guidance through the proprietary Containment Guard process for handling active and highly active pharmaceutical substances, resulting in a tailored end-to-end Containment solution.



Digital and connected

The i Series provides all the technical capabilities needed for state-of-the-art production environments and enables easy plug-and-play integration of process equipment. The machine's open interfaces comply with industry automation standards, allowing integration into a Manufacturing Execution System (MES) or connection to the Internet of Things (IoT).



System compatibility

All process-related assemblies are identical or similar to those of the previous i Series models. This is particularly beneficial for customers already operating additional tablet presses from Fette Compacting.

Four Features That Make Your Production Safe and Fast

The i Series combines decades of know-how with our commitment to always delivering the best solution



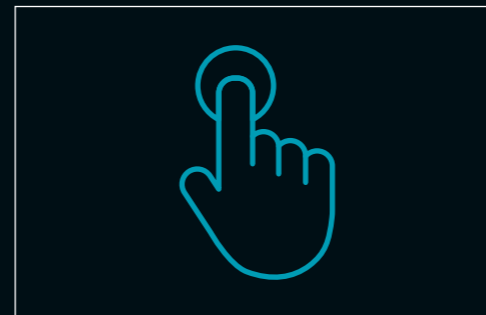
Innovative

- + TRI.EASY Design makes operation, maintenance, and changeover easy, safe, and fast, shortening cleaning times and boosting efficiency.
- + RFID option to enhance process reliability
- + Dust-tightness as standard
- + Multi-format tablet discharge reduces the risk of material jams



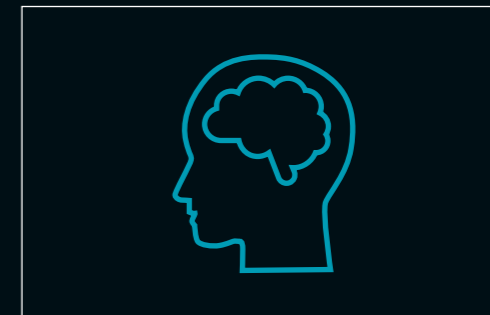
Integrative

- + Easy integration into existing production environments thanks to system compatibility with previous models
- + Standardized interface for process equipment makes production setup quick and straightforward
- + Accessories such as Checkmaster for tablet inspection can be controlled via the HMI



Intuitive

- + HMI software simplifies operation and helps ensure correct press handling
- + Product design enables uncomplicated, efficient, and fast cleaning



Intelligent

- + SmartInterface connects tablet presses to the company network and delivers production and process data in real time. Access via laptop, tablet, or smartphone promotes transparency, data-based production optimization and planning, and rapid response to deviations
- + Built-in assistance systems simplify and secure recipe creation
- + Energy monitoring tracks power consumption as a basis for energy forecasting

F10i

Compact and Rapidly Configurable



The F10i is a high-performance single rotary tablet press for smaller batches with an output of up to 324,000 tablets per hour. Among other features, a mechanical-manual turret clamping system ensures flexibility and versatility. This makes the F10i ideally suited to the demands of dynamic production.



Compact and flexible

Thanks to its compact design and small switch cabinet, the F10i requires only a minimal footprint. With its multi-format tablet discharge, it covers a wide range of applications from micro tablets to effervescent tablets.



Time-saving

Few shrouding parts and dust-tight connections between the machine and process equipment simplify cleaning and protect personnel.



Uncompromising quality

The F10i delivers the same quality as the larger tablet presses in the i Series – for example, with its compression rollers and the Fill-O-Matic, which ensures uniform and precise die filling. The F10i is the smallest machine that meets Containment requirements.

F20i

All-Rounder for Maximum Flexibility



With an output of up to 475,200 tablets per hour and the optional Pmax® turret technology, the F20i is the all-rounder of the i Series. It is suitable for a broad spectrum of products and batch sizes, delivering maximum flexibility in manufacturing.



Optimized

Numerous improvements over the previous model – such as the multiformat tablet discharge for a wide range of applications and the simplified turret change-over system – make handling easier.



Time-saving

Few shrouding parts and dust-tight connections between the machine and process equipment facilitate cleaning and protect personnel.



Adaptable for ePAT and FE CPS

Both continuous production with the FE CPS and embedded Process Analytical Technology (ePAT) for continuous real-time quality monitoring can be implemented.

F30i

Efficient Double Rotary Tablet Press for Maximum Output

The F30i is a high-performance double rotary tablet press with an ultra-fast first-layer sample pull. Producers can quickly adapt the tablet press to varying requirements. Designed for the production of large batches, the F30i delivers a maximum output of up to 1.6 million tablets per hour.



Optimized

When producing bi-layer tablets, the fast first-layer sample pull improves quality. Numerous improvements over the previous model simplify handling, including an innovative multi-format tablet discharge for a broad range of applications and an optimized turret change-over system.



Time-saving

Few shrouding parts and dust-tight connections between the machine and process equipment facilitate cleaning and protect personnel.



Adaptable for ePAT and FE CPS

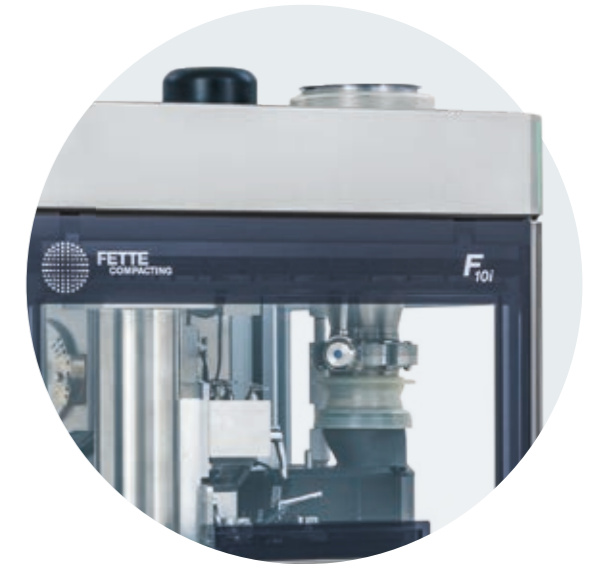
Both continuous production with the FE CPS and embedded Process Analytical Technology (ePAT) for continuous real-time quality monitoring can be implemented.



Technical Data

F10i

The i Series can be configured to suit your needs. We are happy to advise you on selecting the right punches, segments, and dies to ensure the optimal configuration.



Technical machine data										
Pitch circle diameter	mm	280	280	280	280	280	280	280	280	280
Compression force pre- and main compression 1*	kN	0–80	0–80	0–80	0–80	0–80	0–80	0–80	0–80	0–80
Turret rotation speed 2**	min ⁻¹	5–120	5–120	5–120	5–120	5–120	5–120	5–120	5–120	5–120
Dimensions L x W x H	mm	925 x 1,112 x 1,875 ***								
Weight		Tablet press approx. 2,100 kg ****, HMI operating terminal 90 kg								
Electrical supply parameters		Operating voltage 400–480 V, frequency 50/60 Hz, power requirement 9 kW								
Turret specifications										
Dies (D)/Segments (S)		D	D	D	D	S	S	S	S	S
Number of punch stations		32	30	24	20	45	30	24	21	21
Punch type		EU19 TSM19 BBS	FS19® EU19 TSM19 BB	FS19® EU19 TSM19 B	EU1* EU1*-441 TSM1* D	FS12®	FS19® EU19 TSM19	EU1* TSM1*	EU1*-441	EU28
Tablet output units/h	min.	48,000	45,000	36,000	30,000	67,500	45,000	36,000	31,500	–
	max.	230,400	216,000	172,800	120,000	324,000	216,000	144,000	126,000	126,000
Max. compression force 1*****	kN	80	80	80	80	34	80	80	80	80
Max. compression force 2*****	kN	80	80	80	80	34	80	80	80	80
Max. tablet diameter	mm	11	13	18	25	11	18	25	25	27
Max. filling depth*****	mm	18	18	18	18	20	20	20	20	20
Recommended turret rotation speed	min.	min ⁻¹	25	25	25	25	25	25	25	15
	max.	min ⁻¹	120	120	120	100	120	120	100	100
Die/segment height	mm	22.225	22.225	22.225	20.8	25	25	25	25	25
Die diameter	mm	22	24	30.16	38.1	–	–	–	–	–
Punch shaft diameter	mm	19	19	19	25.35	12	19	25.35	25.35	28
Punch length upper/lower punch	mm	133.6 (133.35)	133.6 (133.35)	133.6 (133.35)	133.6 (133.35)	133.6	133.6 (133.35)	133.6 (133.35)	133.6	133.6
Upper punch insertion depth	mm	1–5	1–5	1–5	1–5	1–5	1–5	1–5	1–5	1–5

Theoretical values or technical limits: These may vary in practice depending on the product and application. Tablet thickness is a product-dependent variable and can vary significantly. * The minimum pressing force must exceed a certain value for the punch to rotate the pressure roller. The maximum pressing force depends on the installed tableting tools. ** The minimum and maximum possible rotational speed depends on the specific application. *** Dimensions may vary depending on option. **** Weight may vary depending on option. ***** Limited by punch properties. ***** Special filling depth available on request. Disclaimer: Some of the functions described in this brochure are optional and depend on the individual machine configuration upon request.

Technical Data

F20i

The i Series can be configured to suit your needs. We are happy to advise you on selecting the right punches, segments, and dies to ensure the optimal configuration.



Technical machine data										
Pitch circle diameter	mm	410	410	410	410	410	410	410	410	410
Compression force pre- and main compression 1*	kN	0–100	0–100	0–100	0–100	0–100	0–100	0–100	0–100	0–100
Turret rotation speed 2**	min ⁻¹	5–120	5–120	5–120	5–120	5–120	5–120	5–120	5–120	5–120
Dimensions L x W x H	mm	1,220 x 1,220 x 2,022								
Weight		Tablet press approx. 3,300–3,500 kg, HMI operating terminal 90 kg, switch cabinet 270 kg								
Electrical supply parameters		Operating voltage 400–480 V, frequency 50/60 Hz, power requirement 13.2 kW								
Turret specifications										
Dies (D)/Segments (S)		D	D	D	D	S	S	S	S	S
Number of punch stations		47	43	36	30	66	45	36	33	33
Punch type		EU19 EU19FS TSM19	FS19® EU19 TSM19 BB	FS19® EU19 TSM19 B	EU1* EU1*-441 TSM1* D	FS12®	FS19® EU19 TSM19	EU1* TSM1"	EU1*-441	EU28
Tablet output units/h	min.	42,300	38,700	32,400	27,000	59,400	40,500	32,400	29,700	–
	max.	338,400	309,600	259,200	180,000	475,200	324,000	216,000	198,000	198,000
Max. compression force 1***	kN	100	100	100	100	34	100	100	100	80
Max. compression force 2***	kN	100	100	100	100	34	100	100	100	80
Max. tablet diameter	mm	11	13	18	25	11	18	25	25	27
Max. filling depth****	mm	18	18	18	22	20	20	20	20	20
Recommended turret rotation speed	min.	min ⁻¹	15	15	15	15	15	15	15	15
	max.	min ⁻¹	120	120	120	100	120	120	100	100
Die/segment height	mm	22.225	22.225	22.225	23.8	25	25	25	25	25
Die diameter	mm	22	24	30.16	38.1	–	–	–	–	–
Punch shaft diameter	mm	19	19	19	25.35	12	19	25.35	25.35	28
Punch length upper/lower punch	mm	133.6	133.6 (133.35)	133.6 (133.35)	133.6 (133.35)	133.6	133.6 (133.35)	133.6 (133.35)	133.6	133.6
Upper punch insertion depth	mm	1–5	1–5	1–5	1–5	1–5	1–5	1–5	1–5	1–5

Theoretical values or technical limits: These may vary in practice depending on the product and application. Tablet thickness is a product-dependent variable and can vary significantly. * The minimum pressing force must exceed a certain value for the punch to rotate the pressure roller. The maximum pressing force depends on the installed tableting tools. ** The minimum and maximum possible rotational speed depends on the specific application. *** Limited by punch properties. **** Special filling depth available on request. Disclaimer: Some of the functions described in this brochure are optional and depend on the individual machine configuration upon request.

Technical Data

F30i

The i Series can be configured to suit your needs. We are happy to advise you on selecting the right punches, segments, and dies to ensure the optimal configuration.

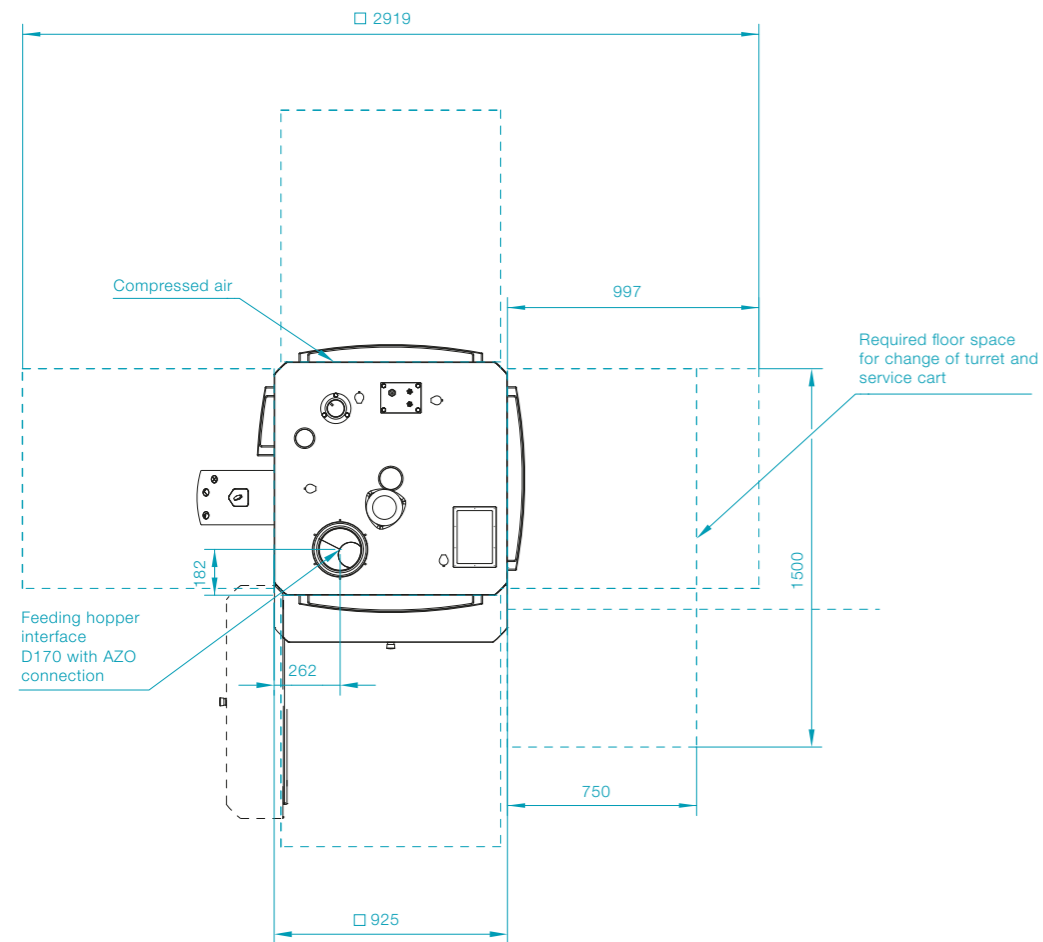
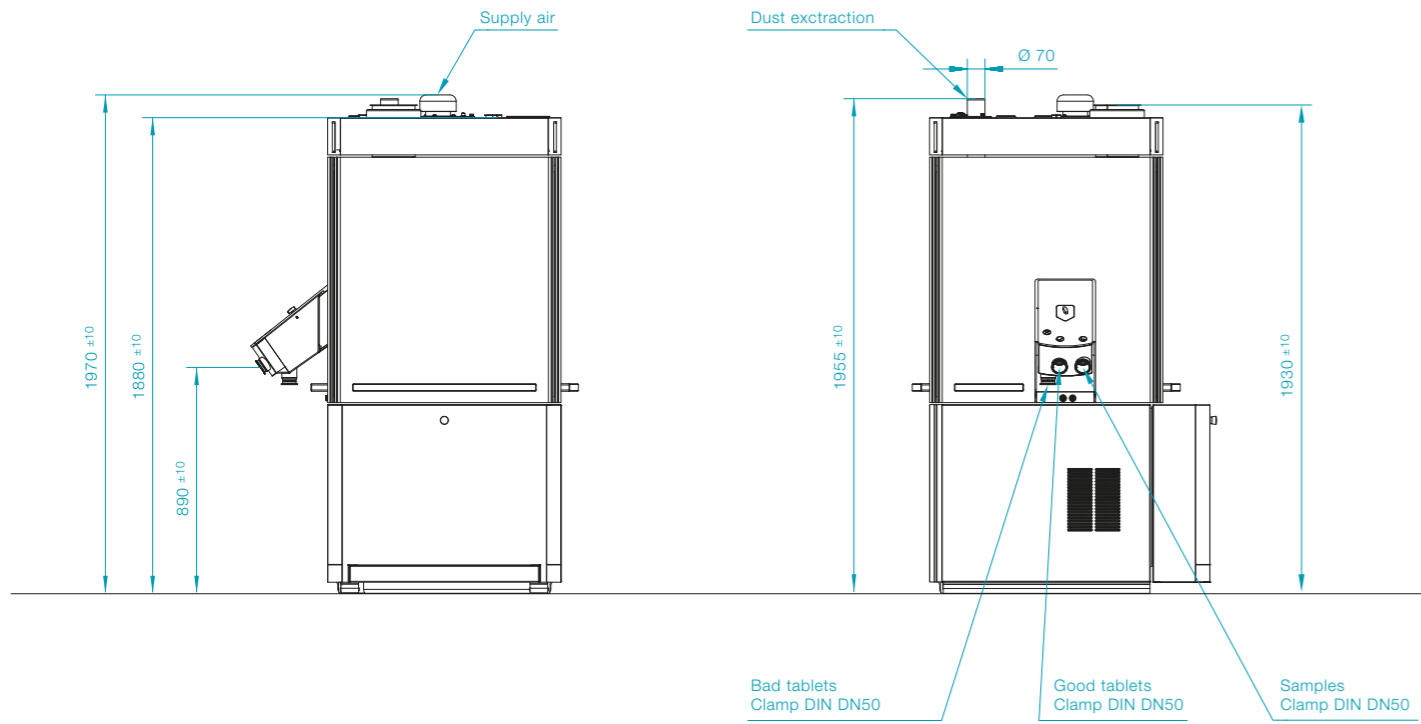


Technical machine data										
Pitch circle diameter	mm	680	680	680	680	680	680	680	680	680
Compression force pre- and main compression 1*	kN	0–100	0–100	0–100	0–100	0–100	0–100	0–100	0–100	0–100
Turret rotation speed 2**	min ⁻¹	5–120	5–120	5–120	5–120	5–120	5–120	5–120	5–120	5–120
Dimensions L x W x H	mm	1,394 x 1,394 x 2,030								
Weight		Tablet press 4,600 kg, HMI operating terminal 90 kg, switch cabinet 350 kg								
Electrical supply parameters		Operating voltage 400–480 V, frequency 50/60 Hz, power requirement 17 kW								
Turret specifications										
Dies (D)/Segments (S)		D	D	D	D	S	S	S	S	S
Number of punch stations		79	73	61	49	110	75	55	55	55
Punch type		FS19® EU19 BBS	FS19® EU19 TSM19 BB	FS19® EU19 TSM19 B	EU1* EU1*-441 TSM1* D	FS12®	FS19® EU19 TSM19	EU1* EU1*-441 TSM1*	EU28	
Tablet output units/h	min.	142,200	131,400	109,800	88,200	396,000	135,000	99,000	–	–
	max.	1,137,600	1,051,200	878,400	470,400	1,584,000	1,080,000	528,000	528,000	528,000
Max. compression force 1***	kN	100	100	100	100	34	100	100	80	80
Max. compression force 2***	kN	100	100	100	100	34	100	100	80	80
Max. compression force 3***	kN	100	100	100	100	34	100	100	–	–
Max. compression force 4***	kN	100	100	100	100	34	100	100	–	–
Max. tablet diameter	mm	11	13	18	25	11	18	25	27	27
Max. filling depth****	mm	18	18	18	18	20	20	20	20	20
Recommended turret rotation speed	min.	min ⁻¹	15	15	15	15	15	15	15	15
	max.	min ⁻¹	120	120	120	80	120	120	100	80
Die/segment height	mm	22.225	22.225	22.225	23.8	25	25	25	25	25
Die diameter	mm	22	24	30.16	38.1	–	–	–	–	–
Punch shaft diameter	mm	19	19	19	25.35	12	19	25.35	28	28
Punch length upper/lower punch	mm	133.6	133.6 (133.35)	133.6 (133.35)	133.6 (133.35)	133.6 (133.35)	133.6 (133.35)	133.6 (133.35)	133.6	133.6
Upper punch insertion depth	mm	1–5 (8*****)	1–5 (8*****)	1–5 (8*****)	1–5 (8*****)	1–5 (8*****)	1–5 (8*****)	1–5 (8*****)	1–5 (8*****)	1–5 (8*****)

Theoretical values or technical limits: These may vary in practice depending on the product and application. Tablet thickness is a product-dependent variable and can vary significantly. * The minimum pressing force must exceed a certain value for the punch to rotate the pressure roller. The maximum pressing force depends on the installed tableting tools. ** The minimum and maximum possible rotational speed depends on the specific application. *** Limited by punch properties. **** Special filling depth available on request. ***** 2-layer-operation. Disclaimer: Some of the functions described in this brochure are optional and depend on the individual machine configuration upon request.

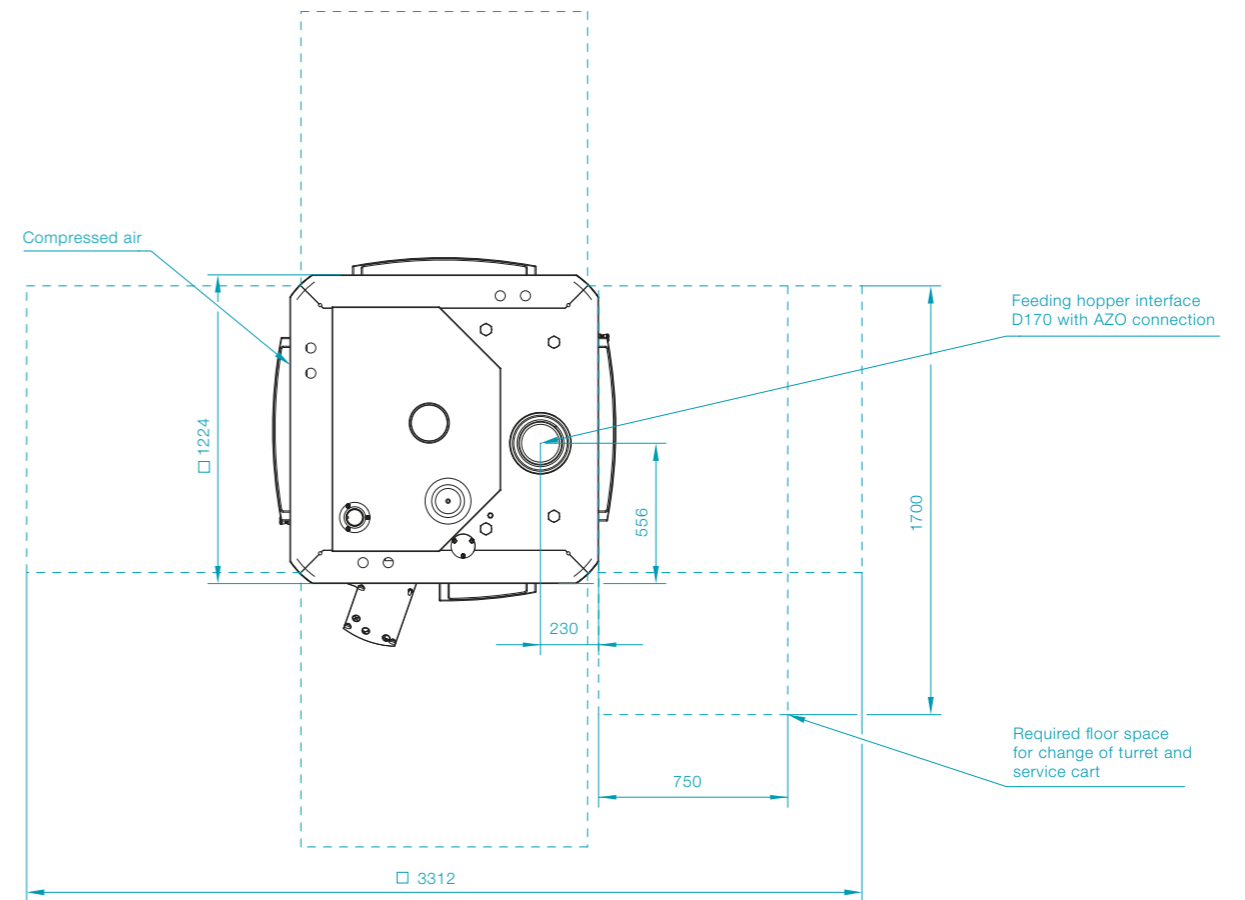
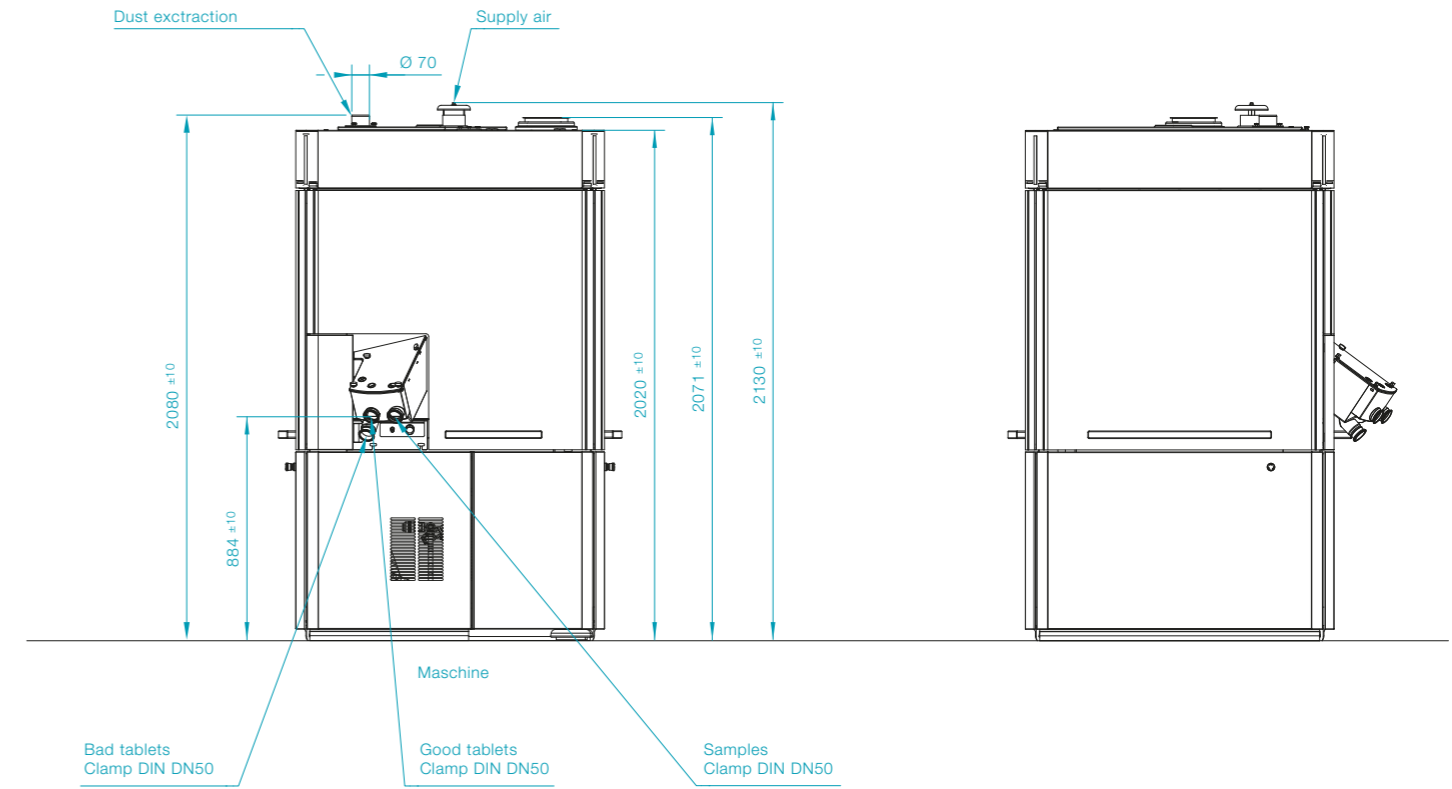
Dimensions

F10i



M 1:30 | All dimensions are in mm, unless otherwise specified.

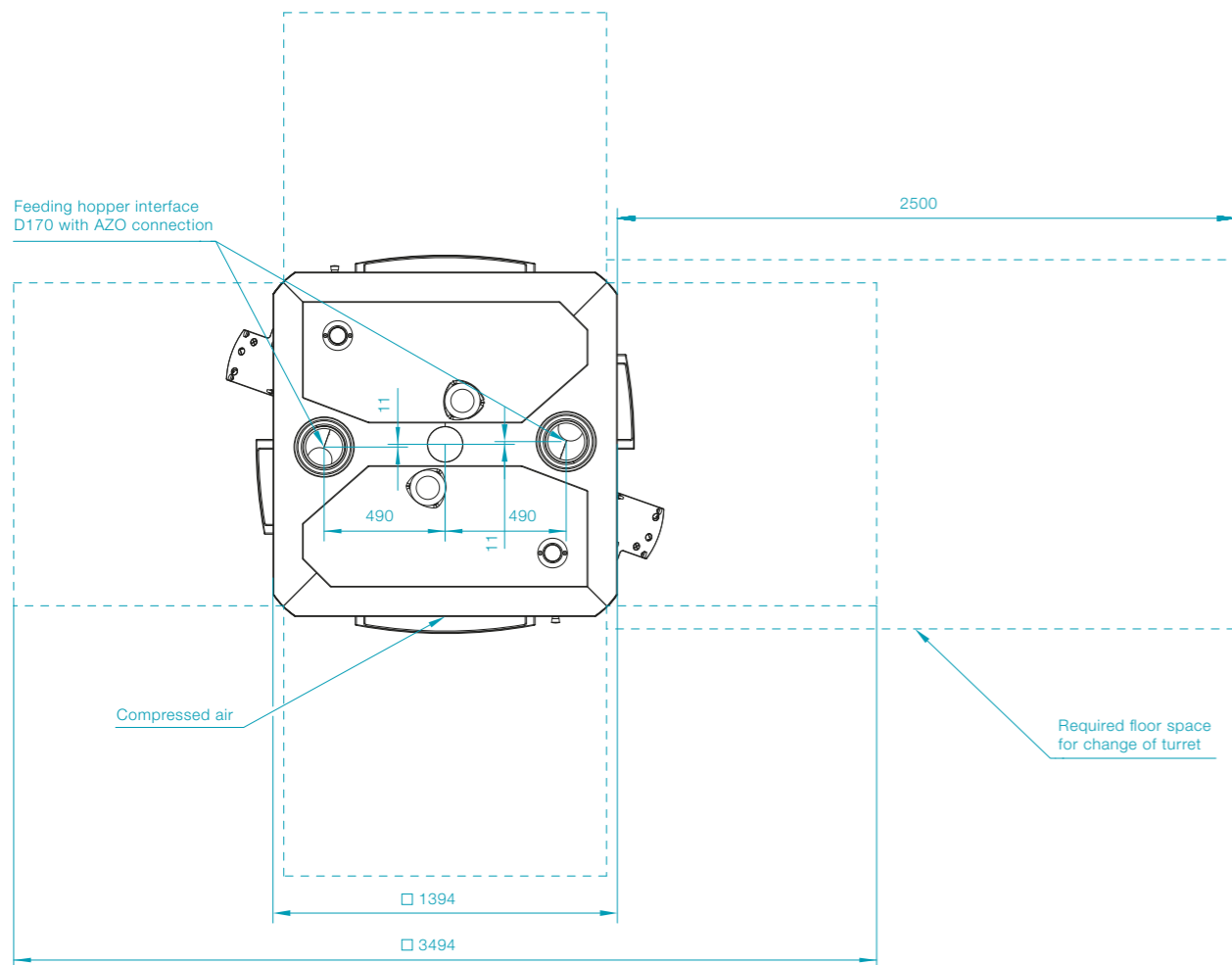
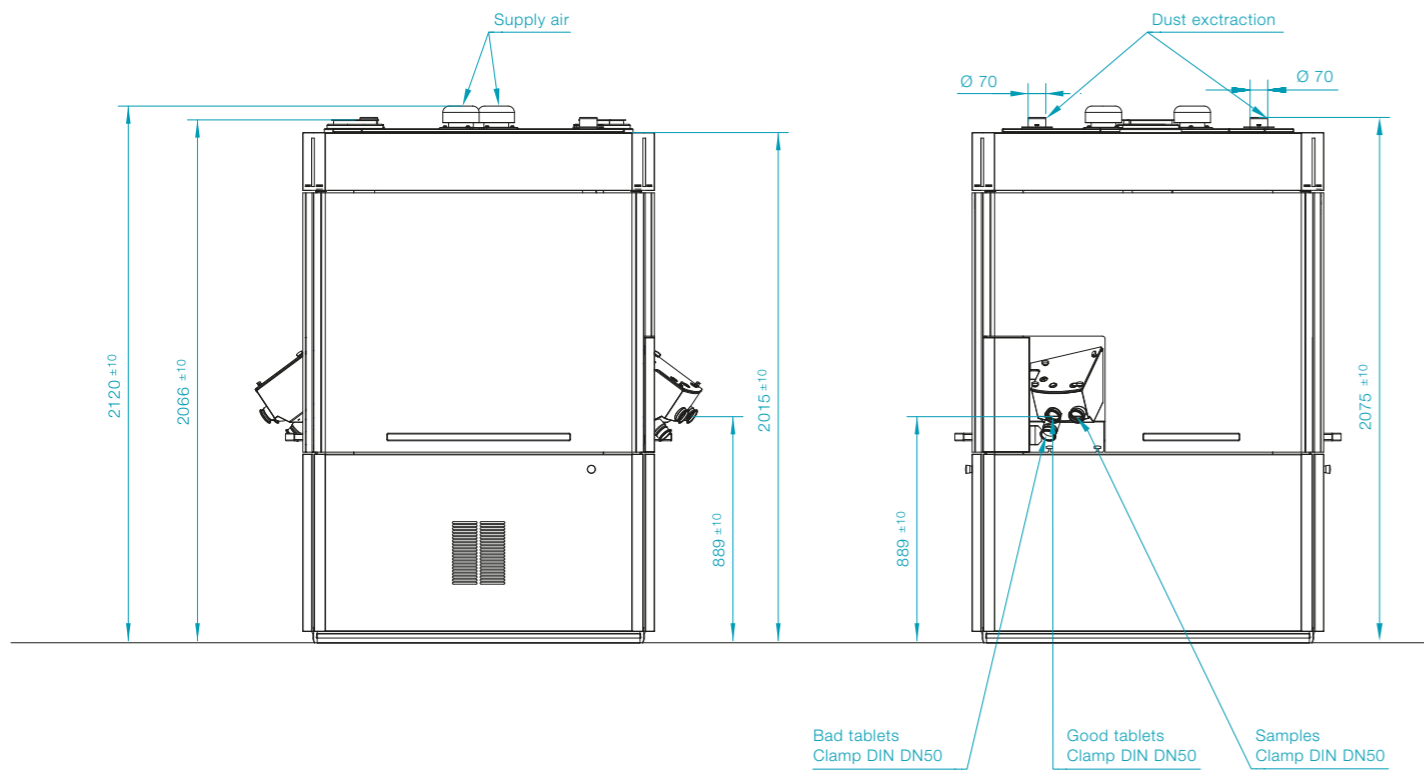
F20i



M 1:30 | All dimensions are in mm, unless otherwise specified.

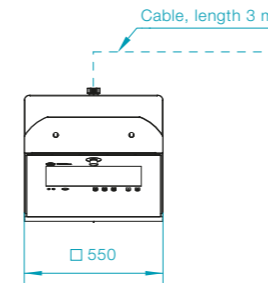
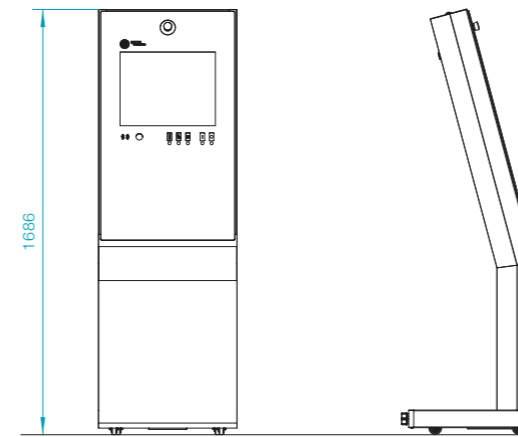
Dimensions

F30i



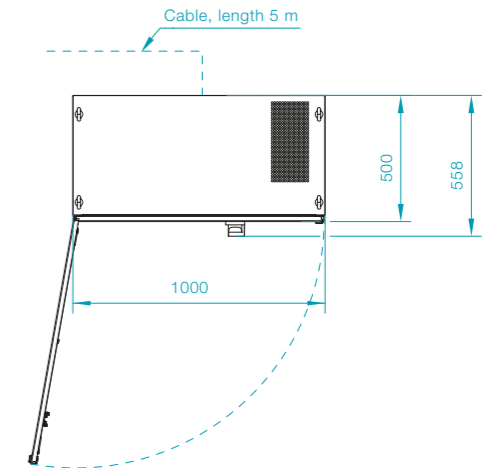
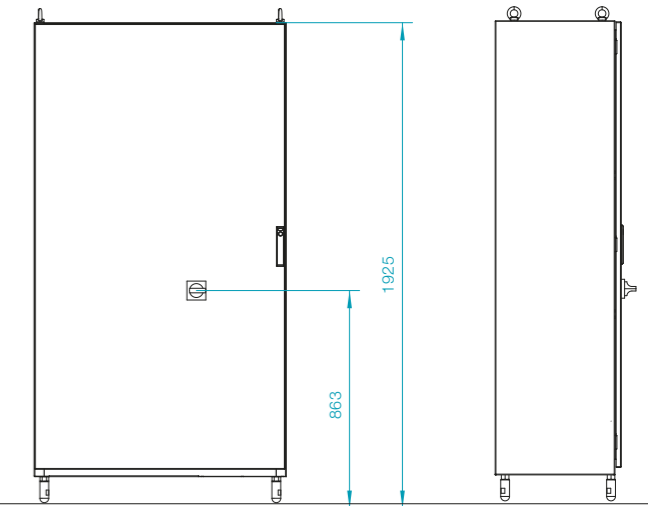
M 1:30 | All dimensions are in mm, unless otherwise specified.

HMI operating terminal



M 1:30 | All dimensions are in mm, unless otherwise specified.

Switch cabinet



Discover More Products and Services

Complete brochure overview:
www.fette-compacting.com/en/downloads



Containment Guard

With the Containment Guard, Fette Compacting standardizes the retention performance of containment systems and makes it measurable and comparable in real-world conditions. On this basis, we integrate machines and processes for the safe handling of active ingredients from R&D to serial production.

- + Integrated, end-to-end containment
- + Measurable retention performance and SMEPAC validation
- + Custom-fit solution for your specific requirements



Brochure: Containment Guard

Together – from lab to production

With us, your product reaches market readiness faster. As an experienced R&D and process partner, Fette Compacting supports manufacturers with decades of expertise across the entire product lifecycle – from the first formulation concept to market launch and production.

- + Effective consulting and testing under GMP conditions
- + Services from formulation to process optimization
- + Faster time-to-market for your product

together 
from lab
to production



Brochure: Together – from lab to production

Tableting Tools

Our tableting tools optimize the performance and cost-efficiency of your tablet production. Precisely engineered punches and segment technologies, premium materials, and coatings increase output, reduce wear, and ensure consistently high tablet quality.

- + Higher output through optimized tool geometry
- + Longer service life and reduced wear
- + Efficient handling, cleaning, and tool management



Brochure: Tableting Tools

R&D Solutions

Our R&D Solutions guide you from the first powder analysis all the way to validated serial production. Based on the Quality by Design (QbD) principle and cutting-edge technology, we minimize scale-up risks and shorten your time-to-market – for robust, scalable, and reliable tableting processes.

- + Efficient formulation development
- + Production-like process development
- + Seamless scale-up and secure technology transfer
- + Global training program



Brochure: R&D Solutions

Production Services

Our Production Services provide comprehensive support for your tablet production – from initial commissioning to process optimization in day-to-day operation. Our experts ensure maximum machine availability, minimal downtimes, and future-proof systems.

- + Technical support and fast spare parts management
- + Data-driven process optimization and fleetmanagement
- + Machine modernization and refurbished pre-owned machines
- + Global training program



Brochure: Production Services

Global Training Program

With our global training program, we bridge the gap between theory and practice and help you unlock the full potential of your tableting processes. We offer tailored modules for every phase of your process – from development to maintenance.

- + Standard modules and customized training programs
- + Certification according to 21 CFR
- + Flexible delivery at your site or at our Competence Centers
- + Global training program in six languages



Brochure: Global Training Program



Europe

Fette Compacting GmbH

Grabauer Strasse 24
 21493 Schwarzenbek, Germany
 Phone +49 4151 12-0
tablet@fette-compacting.com

Fette Compacting Ibérica SL

Avenida Labradores, 1
 2ª Planta, Oficina 3
 28760 Tres Cantos, Spain
 Phone +34 91 8039689
fcib@fette-compacting.com

Fette Compacting France

10 Allée Bienvenue
 93160 Noisy-le-Grand, France
 Phone +33 155 812121
fcf@fette-compacting.com

Fette Compacting Italia Srl

Via Bruno Tosarelli, 155
 40055 Bologna, Italy
 Phone +39 340 5603976
fcit@fette-compacting.com

Fette Compacting Belgium BV

Schallenhoevedreef 1b
 2800 Mechelen, Belgium
 Phone +32 15 684260
fcbe@fette-compacting.com

EuroPharma Machinery Ltd

Unit 12 Highview
 Bordon, Hampshire, GU35 0AX
 United Kingdom
 Phone +44 1420 473344
admin@europharma.co.uk

Asia

Fette Compacting (China) Co., Ltd.

No. 9 Shengtong Road,
 Moling Sub-District,
 Jiangning Development Zone,
 211111 Nanjing
 Jiangsu Province, P.R.C., China
 Phone +86 25 52121818
fcn@fette-compacting.com

Fette Compacting Machinery India Private Limited

Plot No. S 115, Phase III B
 Verna Industrial Estate
 Verna, Goa 403 722, India
 Phone +91 90498 54568
marketing-in@fette-compacting.com

Fette Compacting Asia Pacific Pte Ltd.

2 Bukit Merah Central #18-01
 Singapore 159835, Singapore
 Phone +65 6371 1556
infoasiapacific@fette-compacting.com

Fette Compacting Middle East FZE

Jebel Ali Free Zone, Jafza
 Lobby 14, Office 308, Dubai
 United Arab Emirates
 Phone +971 4 8808226
dubai@fette-compacting.com

North America

Fette Compacting America, Inc.

400 Forge Way
 Rockaway, NJ 07866, USA
 Phone +1 973 5868722
sales@fetteamerica.com

Latin America

Fette Compacting America Latina Ltda.

Av. Cambacica, 610 módulo 10
 Parque Imperador
 CEP 13097-160
 Campinas / SP, Brazil
 Phone +55 19 37969910
fcsl-info@fette-compacting.com

Fette Compacting Mexico, SA de CV

Adolfo Prieto No. 1638
 Colonia Del Valle Sur
 03100 CDMX, Mexico
 Phone +52 55 40000653
tablet@fette-compacting.com

Africa

Fette Compacting North-West Africa

Résidence les Jardins, Bt B, Chéraga
 16000 Algiers, Algeria
 Phone +213 770 117 007
fcnwa@fette-compacting.com

© by Fette Compacting GmbH

This publication may not be reprinted in whole or part without our express permission. All rights reserved. No rights may be derived from any errors in content or from typographical or typesetting errors. Diagrams, features and dimensions represent the current status on the date of issue of this leaflet. We reserve the right to make technical changes. The visual appearance of the products may not necessarily correspond to the actual appearance in all cases or in every detail.

www.fette-compacting.com